

Fixing by means of welding, steel

1	
2	
3	
4	
5	
6	
7	
8	
9	
10	
11	
12	
13	
14	
15	

VERSIONS

- Type **A**: square body, mounted, with pull ring, without rest position.
- Type **AU**: square body, unmounted, with pull ring, without rest position.
- Type **R**: circular body, mounted, with pull ring, without rest position.
- Type **RU**: circular body, unmounted, with pull ring, without rest position.
- Type **C**: square body, mounted (riveted), with pull ring, with rest position.
- Type **CU**: square body, unmounted, with pull ring, with rest position.
- Type **T**: circular body, mounted (riveted), with pull ring, with rest position.
- Type **TU**: circular body, unmounted, with pull ring, with rest position.
- Type **E**: square body, mounted (riveted), with pull lever, with stop position.
- Type **EU**: square body, unmounted, with pull lever, with stop position.
- Type **V**: circular body, mounted (riveted), with pull lever, with stop position.
- Type **VU**: circular body, unmounted, with pull lever, with stop position.

8 Guide

Steel precision casting
blackened, weldable **ST**

9 Lifting ring

Steel precision casting
zinc-plated, blue passivated

10 Lever

Steel precision casting
zinc-plated, blue passivated

11 Plunger

Zinc-plated steel, blue passivated

12 Spring

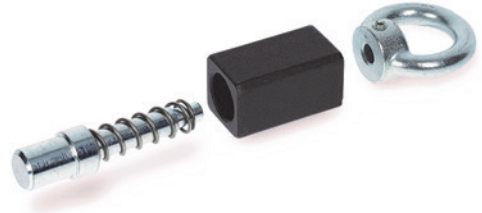
AISI 316Ti stainless Steel

13 Grub screw

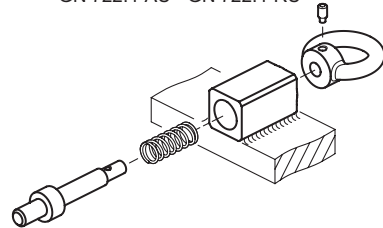
Steel, zinc-plated

FEATURES AND APPLICATIONS

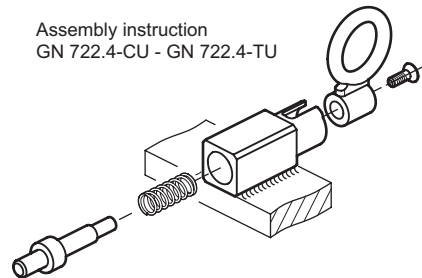
In the GN 722.4 spring indexing plungers the plunger pin is actuated by the pull ring or lever. This operation is performed manually, with a cable or by means of a pulling hook in the versions with pull ring. The dimensional tolerances between plunger pin and guide are selected so that the functional reliability is guaranteed even after welding, applying a corrosion protection layer or in case of contamination. In case of a welded fixing, the unassembled AU, RU, CU, TU, EU, VU versions are particularly recommended to avoid alterations to the microstructure of the material due to heating of the spring and the tip. In this case, the indexing plunger is assembled only after the surface treatment of the welded guide.



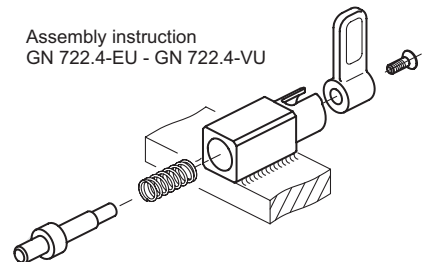
Assembly instruction
GN 722.4-AU - GN 722.4-RU

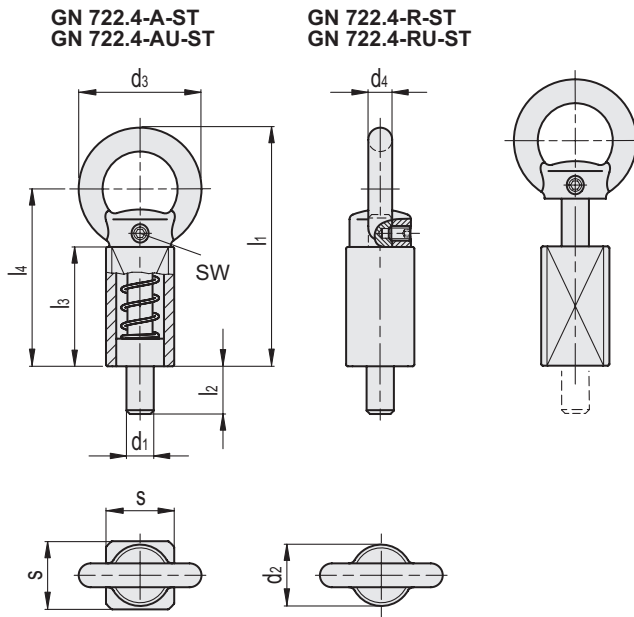


Assembly instruction
GN 722.4-CU - GN 722.4-TU



Assembly instruction
GN 722.4-EU - GN 722.4-VU





Conversion Table 1 mm = 0.039 inch	
d1	
mm	inch
8	0.31
10	0.39
12	0.47
14	0.55
16	0.62
20	0.78

GN 722.4-A-ST

METRIC

Code	Description	d1		d3	d4	l1	l2	l3	l4	s	sw	Spring preload [N]	Spring max load [N]	⚖️
		Plunger -0.05 -0.25	Hole +0.1 +0.3											
GN.28982	GN 722.4-8-20-A-ST	8	36	7	70	14	35	52	20	2	14	35	132	
GN.28986	GN 722.4-10-20-A-ST	10	36	7	70	14	35	52	20	2	14	35	139	
GN.28990	GN 722.4-12-20-A-ST	12	36	7	70	14	35	52	20	2	14	35	140	
GN.28994	GN 722.4-14-20-A-ST	14	36	7	70	14	35	52	20	2	14	35	144	
GN.28998	GN 722.4-16-30-A-ST	16	50	10	100	20	54	78	30	2.5	22	70	461	
GN.29002	GN 722.4-20-30-A-ST	20	50	10	100	20	54	78	30	2.5	22	70	488	

GN 722.4-AU-ST

Code	Description	d1		d3	d4	l1	l2	l3	l4	s	sw	Spring preload [N]	Spring max load [N]	⚖️
		Plunger -0.05 -0.25	Hole +0.1 +0.3											
GN.28984	GN 722.4-8-20-AU-ST	8	36	7	70	14	35	52	20	2	14	35	132	
GN.28988	GN 722.4-10-20-AU-ST	10	36	7	70	14	35	52	20	2	14	35	139	
GN.28992	GN 722.4-12-20-AU-ST	12	36	7	70	14	35	52	20	2	14	35	140	
GN.28996	GN 722.4-14-20-AU-ST	14	36	7	70	14	35	52	20	2	14	35	144	
GN.29000	GN 722.4-16-30-AU-ST	16	50	10	100	20	54	78	30	2.5	22	70	461	
GN.29004	GN 722.4-20-30-AU-ST	20	50	10	100	20	54	78	30	2.5	22	70	488	

GN 722.4-R-ST

Code	Description	d1		d2	d3	d4	l1	l2	l3	l4	sw	Spring preload [N]	Spring max load [N]	⚖️
		Plunger -0.05 -0.25	Hole +0.2 +0.4											
GN.47905	GN 722.4-8-20-R-ST	8	20	36	7	70	14	35	52	2	14	35	114	
GN.47915	GN 722.4-10-20-R-ST	10	20	36	7	70	14	35	52	2	14	35	117	
GN.47925	GN 722.4-12-20-R-ST	12	20	36	7	70	14	35	52	2	14	35	121	
GN.47935	GN 722.4-14-20-R-ST	14	20	36	7	70	14	35	52	2	14	35	125	
GN.47945	GN 722.4-16-30-R-ST	16	30	50	10	100	20	54	78	2.5	22	70	400	
GN.47955	GN 722.4-20-30-R-ST	20	30	50	10	100	20	54	78	2.5	22	70	418	

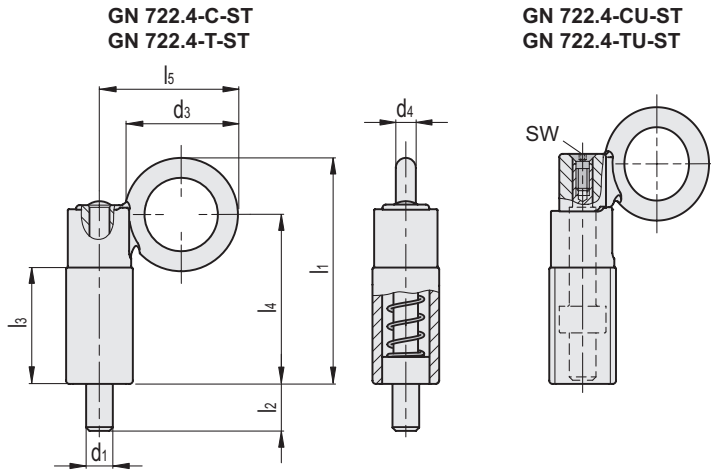
GN 722.4-RU-ST

Code	Description	d1		d2	d3	d4	l1	l2	l3	l4	sw	Spring preload [N]	Spring max load [N]	⚖️
		Plunger -0.05 -0.25	Hole +0.2 +0.4											
GN.47906	GN 722.4-8-20-RU-ST	8	20	36	7	70	14	35	52	2	14	35	114	
GN.47916	GN 722.4-10-20-RU-ST	10	20	36	7	70	14	35	52	2	14	35	117	
GN.47926	GN 722.4-12-20-RU-ST	12	20	36	7	70	14	35	52	2	14	35	121	
GN.47936	GN 722.4-14-20-RU-ST	14	20	36	7	70	14	35	52	2	14	35	125	
GN.47946	GN 722.4-16-30-RU-ST	16	30	50	10	100	20	54	78	2.5	22	70	400	
GN.47956	GN 722.4-20-30-RU-ST	20	30	50	10	100	20	54	78	2.5	22	70	418	

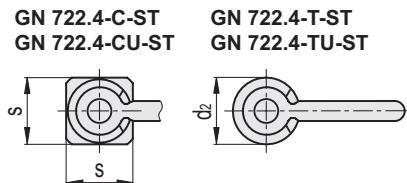


Indexing and positioning elements

- 1
- 2
- 3
- 4
- 5
- 6
- 7
- 8
- 9
- 10
- 11
- 12
- 13
- 14
- 15
- 16
- 17
- 18
- 19



Conversion Table 1 mm = 0.039 inch	
d1	
mm	inch
8	0.31
10	0.39
12	0.47
14	0.55
16	0.62
20	0.78



METRIC

GN 722.4-C-ST

Code	Description	d1										Spring preload [N]	Spring max load [N]	⚖
		Plunger -0.05 -0.25 Hole +0.1 +0.3	d3	d4	l1	l2	l3	l4	l5	s				
GN.47902	GN 722.4-8-20-C-ST	8	34	6	67.8	14	35	50.8	41.5	20	14	35	147	
GN.47912	GN 722.4-10-20-C-ST	10	34	6	67.8	14	35	50.8	41.5	20	14	35	148	
GN.47922	GN 722.4-12-20-C-ST	12	34	6	67.8	14	35	50.8	41.5	20	14	35	149	
GN.47932	GN 722.4-14-20-C-ST	14	34	6	67.8	14	35	50.8	41.5	20	14	35	151	
GN.47942	GN 722.4-16-30-C-ST	16	48	9	102	20	54	78	60	30	22	70	540	
GN.47952	GN 722.4-20-30-C-ST	20	48	9	102	20	54	78	60	30	22	70	541	

GN 722.4-CU-ST

Code	Description	d1										Spring preload [N]	Spring max load [N]	⚖
		Plunger -0.05 -0.25 Hole +0.1 +0.3	d3	d4	l1	l2	l3	l4	l5	s	sw			
GN.47904	GN 722.4-8-20-CU-ST	8	34	6	67.8	14	35	50.8	41.5	20	2.5	14	35	147
GN.47914	GN 722.4-10-20-CU-ST	10	34	6	67.8	14	35	50.8	41.5	20	2.5	14	35	148
GN.47924	GN 722.4-12-20-CU-ST	12	34	6	67.8	14	35	50.8	41.5	20	2.5	14	35	149
GN.47934	GN 722.4-14-20-CU-ST	14	34	6	67.8	14	35	50.8	41.5	20	2.5	14	35	151
GN.47944	GN 722.4-16-30-CU-ST	16	48	9	102	20	54	78	60	30	4	22	70	540
GN.47954	GN 722.4-20-30-CU-ST	20	48	9	102	20	54	78	60	30	4	22	70	541

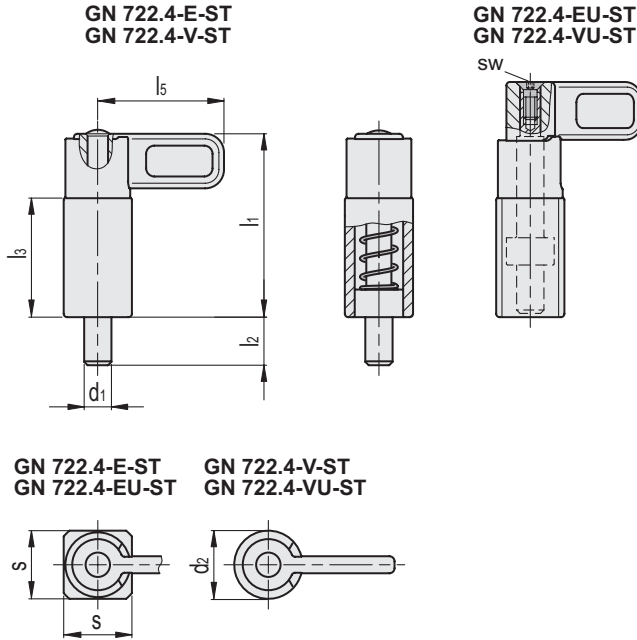
GN 722.4-T-ST

Code	Description	d1										Spring preload [N]	Spring max load [N]	⚖
		Plunger -0.05 -0.25 Hole +0.2 +0.4	d2	d3	d4	l1	l2	l3	l4	l5				
GN.47908	GN 722.4-8-20-T-ST	8	20	34	6	67.8	14	35	50.8	41.5	14	35	126	
GN.47918	GN 722.4-10-20-T-ST	10	20	34	6	67.8	14	35	50.8	41.5	14	35	129	
GN.47928	GN 722.4-12-20-T-ST	12	20	34	6	67.8	14	35	50.8	41.5	14	35	133	
GN.47938	GN 722.4-14-20-T-ST	14	20	34	6	67.8	14	35	50.8	41.5	14	35	138	
GN.47948	GN 722.4-16-30-T-ST	16	30	48	9	102	20	54	78	60	22	70	465	
GN.47958	GN 722.4-20-30-T-ST	20	30	48	9	102	20	54	78	60	22	70	483	

GN 722.4-TU-ST

Code	Description	d1										Spring preload [N]	Spring max load [N]	⚖
		Plunger -0.05 -0.25 Hole +0.2 +0.4	d2	d3	d4	l1	l2	l3	l4	l5	sw			
GN.47910	GN 722.4-8-20-TU-ST	8	20	34	6	67.8	14	35	50.8	41.5	2.5	14	35	126
GN.47920	GN 722.4-10-20-TU-ST	10	20	34	6	67.8	14	35	50.8	41.5	2.5	14	35	129
GN.47930	GN 722.4-12-20-TU-ST	12	20	34	6	67.8	14	35	50.8	41.5	2.5	14	35	133
GN.47940	GN 722.4-14-20-TU-ST	14	20	34	6	67.8	14	35	50.8	41.5	2.5	14	35	138
GN.47950	GN 722.4-16-30-TU-ST	16	30	48	9	102	20	54	78	60	4	22	70	465
GN.47960	GN 722.4-20-30-TU-ST	20	30	48	9	102	20	54	78	60	4	22	70	483

Indexing and positioning elements



Conversion Table 1 mm = 0.039 inch	
d1	
mm	inch
8	0.31
10	0.39
12	0.47
14	0.55
16	0.62
20	0.78

GN 722.4-E-ST

Code	Description	d1						s	Spring preload [N]	Spring max load [N]	⚖️
		Plunger -0.05 -0.25 Hole +0.1 +0.3	l1	l2	l3	l5					
GN.75802	GN 722.4-8-20-E-ST	8	54	14	35	37	20	14	35	143	
GN.75812	GN 722.4-10-20-E-ST	10	54	14	35	37	20	14	35	147	
GN.75822	GN 722.4-12-20-E-ST	12	54	14	35	37	20	14	35	150	
GN.75832	GN 722.4-14-20-E-ST	14	54	14	35	37	20	14	35	155	
GN.75842	GN 722.4-16-30-E-ST	16	83	20	54	55	30	22	70	531	
GN.75852	GN 722.4-20-30-E-ST	20	83	20	54	55	30	22	70	549	

GN 722.4-EU-ST

Code	Description	d1						s	sw	Spring preload [N]	Spring max load [N]	⚖️
		Plunger -0.05 -0.25 Hole +0.1 +0.3	l1	l2	l3	l5						
GN.75804	GN 722.4-8-20-EU-ST	8	54	14	35	37	20	2.5	14	35	143	
GN.75814	GN 722.4-10-20-EU-ST	10	54	14	35	37	20	2.5	14	35	146	
GN.75824	GN 722.4-12-20-EU-ST	12	54	14	35	37	20	2.5	14	35	150	
GN.75834	GN 722.4-14-20-EU-ST	14	54	14	35	37	20	2.5	14	35	154	
GN.75844	GN 722.4-16-30-EU-ST	16	83	20	54	55	30	4	22	70	529	
GN.75854	GN 722.4-20-30-EU-ST	20	83	20	54	55	30	4	22	70	547	

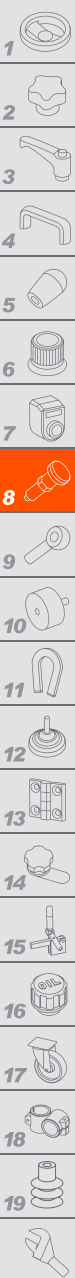
GN 722.4-V-ST

Code	Description	d1						l5	Spring preload [N]	Spring max load [N]	⚖️
		Plunger -0.05 -0.25 Hole +0.2 +0.4	d2	l1	l2	l3					
GN.75808	GN 722.4-8-20-V-ST	8	20	54	14	35	37	14	35	122	
GN.75818	GN 722.4-10-20-V-ST	10	20	54	14	35	37	14	35	125	
GN.75828	GN 722.4-12-20-V-ST	12	20	54	14	35	37	14	35	128	
GN.75838	GN 722.4-14-20-V-ST	14	20	54	14	35	37	14	35	133	
GN.75848	GN 722.4-16-30-V-ST	16	30	83	20	54	55	22	70	454	
GN.75858	GN 722.4-20-30-V-ST	20	30	83	20	54	55	22	70	472	

GN 722.4-VU-ST

Code	Description	d1						sw	Spring preload [N]	Spring max load [N]	⚖️
		Plunger -0.05 -0.25 Hole +0.2 +0.4	d2	l1	l2	l3	l5				
GN.75810	GN 722.4-8-20-VU-ST	8	20	54	14	35	37	2.5	14	35	121
GN.75820	GN 722.4-10-20-VU-ST	10	20	54	14	35	37	2.5	14	35	124
GN.75830	GN 722.4-12-20-VU-ST	12	20	54	14	35	37	2.5	14	35	128
GN.75840	GN 722.4-14-20-VU-ST	14	20	54	14	35	37	2.5	14	35	132
GN.75850	GN 722.4-16-30-VU-ST	16	30	83	20	54	55	4	22	70	453
GN.75860	GN 722.4-20-30-VU-ST	20	30	83	20	54	55	4	22	70	471

METRIC



Indexing and positioning elements